

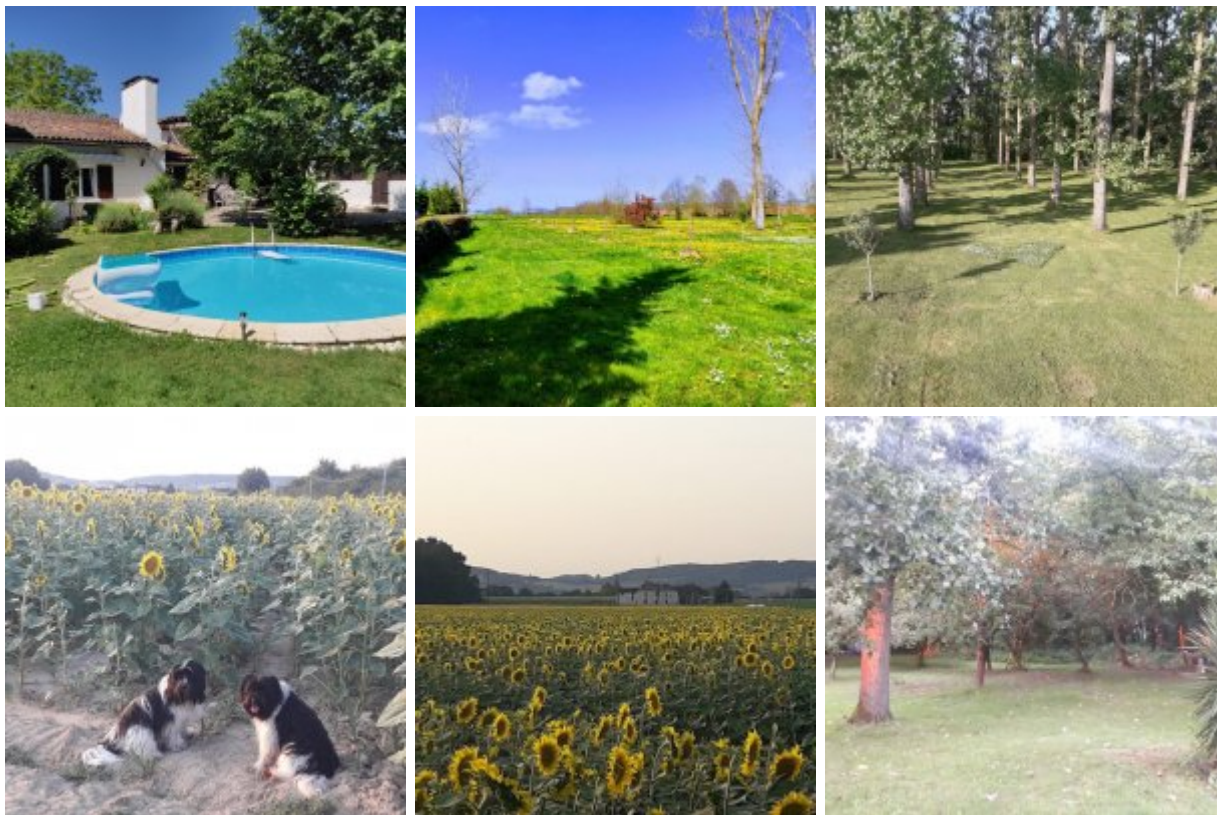
# Gite Pola aka cottage Teoules-Bas

## Sumario

This beautiful gite offers comfortable accommodation of a high standard.

All facilities (Pool , sauna, hottub) are exclusive for the guest-couple.

Private parking



## Descripción

The cottage is part of a typical old farmhouse from Gascony, which was a working farm until a few years ago. It is located in the small hamlet of Teoules, about three kilometers from most of our municipality, Bourran. Teoules nestles in the lower parts of the hills that run along the Lot valley. In all directions you look out on hill slopes with sunflowers, corn and cornfields. Bourran is just over a kilometer from the River Lot, close to the attractive and medieval village of Clairac.

Parts of the house are sometimes 400/500 years old and have been modernized to a high standard while retaining the character and the offers:

- a large bedroom with en-suite bathroom
- Large living room with dining area and beautiful old brick fireplace from Toulouse with wood burning stove
- pleasant farmhouse kitchen fully equipped with oven, gas hob, fridge, freezer, dishwasher, microwave, washing machine, etc.

Independent

No smoking inside; Adults only; Dishwasher; Washing machine; Tumble dryer; Iron Fenced garden; Pets welcome; TV InternetWIFI, TV France, Netflix, Amazon Prime, Disney, NLZIET; Fireplace; Hair dryer; Sauna;

Jacuzzi; swimming pool ; Private pool

This beautiful gite offers extremely comfortable accommodation of a high standard. All facilities (Pool , sauna, hottub) are exclusive for the guest-couple. The cottage is part of a typical old farmhouse from Gascony, which was a working farm until a few years ago. It is located in the small hamlet of Teoules, about three kilometers from most of our municipality, Bourran. Teoules nestles in the lower parts of the hills that run along the Lot valley. In all directions you look out on hill slopes with sunflowers, corn and cornfields. Bourran is just over a kilometer from the River Lot, close to the attractive and medieval village of Clairac.

Parts of the house are sometimes 400/500 years old and have been modernized to a high standard while retaining the character and the offers:

-a large bedroom with en-suite bathroom

-Large living room with dining area and beautiful old brick fireplace from Toulouse with wood burning stove

-pleasant farmhouse kitchen fully equipped with oven, gas hob, fridge, freezer, dishwasher, microwave, washing machine, etc.

## Mapa

**Dirección:** 2445 Route de Saint Vincent

**Código postal:** 47320

**Latitud / Longitud:** 44.31900412361953 / 0.4289040565490687



image type unknown  
[http://maps.google.com/maps/api/staticmap?key=AlzaSyBR4\\_NoKZs2jqWNivIYesHGr12nVUp9KCk&center=44.31900412361953,0.4289040565490687](http://maps.google.com/maps/api/staticmap?key=AlzaSyBR4_NoKZs2jqWNivIYesHGr12nVUp9KCk&center=44.31900412361953,0.4289040565490687)

<b>Nearest airport</b>	Bergerac or Bordeaux	100 km
<b>Nearest beach</b>	Bordeaux	100 km
<b>Nearest boulangerie</b>	Clairac	6 km
<b>Nearest doctor</b>	Praysas	10 km
<b>Nearest market</b>	Praysas	10 km
<b>Nearest river</b>	Lot or Garonne	5 km
<b>Nearest supermarket</b>	Clairac	6 km
<b>Nearest train station</b>	Marmande	15 km

## Direcciones

By Road

If you have a GPS/SatNav device that allows navigating to precise co-ordinates (such as TomTom), you can target us at

these co-ordinates : 44° 19' 08.44"N 0° 25' 44.16"E

Directions....

From Bordeaux... (time to Téoulés apx 60 mins)

Take the A62 autoroute signed to Agen/Toulouse, leaving at Jct 6 (Aiguillon). After the toll booth turn right towards Aiguillon on the D8. Stay on this passing a turning to Aiguillon (you can always explore Aiguillon later) until the T junction on to the D813. Turn left on to the D813 and after about 2 kms take the right slip road D666 signed to Villeneuve-Sur-Lot. After about 6 kms you pass the commune sign for Bourran. Turn right at the Bureau de Poste (signed to Prayssas)

Then see "Final Local Directions" below :

From Toulouse... (time to Téoulés apx 90 mins)

Take the A62 autoroute, signed to Bordeaux, leaving at Jct 6 (Aiguillon). After the toll booth turn right towards Aiguillon on the D8. Stay on this passing a turning to Aiguillon (you can always explore Aiguillon later) until the T junction on to the D813. Turn left on to the D813 and after about 2 kms take the right slip road D666 signed to Villeneuve-Sur-Lot. After about 6 kms you pass the commune sign for Bourran. Turn right at the Bureau de Poste (signed to Prayssas)

Then see "Final Local Directions" below :

From Bergerac.... (time to Téoulés apx 60 mins)

From Bergerac take the RN21 south to Villeneuve. Then head west on to the D911 signed to Bordeaux/Aiguillon/Tonneins. Stay on this road for about 12 kms to Le Temple-sur-Lot where the same road becomes the D666. Stay on this for a further 10 kms, straight on at the roundabout into Bourran. Turn left at the Bureau de Poste (signed to Prayssas)

Then see "Final Local Directions" below :

From Villeneuve-sur-Lot... (time to Téoulés apx 25 mins)

Head west on to the D911 signed to Bordeaux/Aiguillon/Tonneins. Stay on this road for about 12 kms to Le Temple-sur-Lot where the same road becomes the D666. Stay on this for a further 10 kms, straight on at the roundabout into Bourran. Turn left at the Bureau de Poste (signed to Prayssas)

Then see "Final Local Directions" below :

Final Local Directions from Bourran to Teoules

After taking the Prayssas turning in Bourran follow on for about 1.5 km into Colleignes, then take the left turn signed to Prayssas, up a short slope until, after about 2 kms, you reach the 'Téoulés' sign. Continue past a large white farmhouse on the left (our home) which has a large Parasol Pine tree in front, then past a small white bungalow. Immediately after the bungalow, you will see two gravel driveways. The right hand driveway bears the sign for GITE POLA.

Drive in here up to the top and loudly sound your car horn and we will come running out to greet you.... welcome to your holiday home.

Alojamiento, instalaciones y servicios

Gite

Comida y cuarto:

- Self catering

**Habitación(es):** 1 ( 2 Huéspedes )

Double bedrooms en-suite: 1

**Baño(s):** 1

Jacuzzi bath: Sí, Showers: 1, Toilets: 1, Wash basins: 1

Idoneidad

- **Alquiler a largo plazo:** No adecuado
- **Mascotas:** Permitidas
- **Fumadores:** Prohibido
- **Niños:** No adecuado
- **Silla de ruedas:** No apto
- **Ancianos o enfermos:** Adecuado

Clase de vacaciones

Rural holidays, Rustic holidays

Vista

Countryside views

Instalaciones generales

Garden, Garden furniture, Sauna, WiFi

Instalaciones de interior

Coffee Maker, Dishwasher, Fridge freezer, Iron and Board, Microwave, TV, Washing machine

Instalaciones de exterior

BBQ, Gas BBQ, Hot tub, Patio, Swimming pool (private), Terrace

Servicios

Cleaning inclusive, Linen inclusive, Towels inclusive, Weekly clean inclusive

Acceso

Off-road parking, Private car park

Actividades

Actividades locales:

Canoeing, Fishing, Walking

Tarifas

-	Tarifa por noche		Por semana	Mensual	Estancia mín.	Recambio
	Semana	Fin de semana				
Resumen de tarifa	£94.86 - £103.48		£655.40 - £741.64	-	7 Noches	-
2024-03-02 - 2024-06-28	£94.86	-	£655.40	-	7 Noches	Sáb - Sáb
2024-06-29 - 2024-08-30	£103.48	-	£741.64	-	7 Noches	Sáb

-	Tarifa por noche		Por semana	Mensual	Estancia mín.	Recambio
	Semana	Fin de semana				
2024-08-31 - 2024-09-27	£94.86	-	£655.40	-	7 Noches	Sáb

Política de Reserva

Entrada: 15:00, Salida: 10:00

